

HEX FLASH ECU PROGRAMMING TOOL

CONTENTS

2 INTRODUCTION

3-4 INSTALLATION IN WINDOWS 8

5-7 MANUAL DRIVER INSTALL

8-15 READ AND WRITING TO ECU

INTRODUCTION

Thank you for purchasing the HEX FLASH ECU PROGRAMMING TOOL

- 1) It is a pre-requisite that your vehicle is in good working condition prior to installing this product. If you are not sure, you are advised to seek a professional opinion from a certified BMW technical center. Hex Flash and its affiliates do not accept liability for consequential losses or damages. Full terms and conditions are provided with this product.
- 2) Together with the Hex Flash OBD2 programming cable you should find and enclosed USB drive. The USB drive contains the Hex Flash programming software application, a step-by-step programming instruction guide and terms and conditions of use.

Compatible with your PC LAPTOP/MAC (PC-EMULATOR MODE) THIS APPLICATION WILL ALLOW YOU TO READ/WRITE TO YOUR ECU.

- 3) INSTALL APPLICATION ON YOUR LAPTOP
- 4) PLUG HEX FLASH CABLE INTO YOUR OBD2 PORT BEHIND THE REMOVEABLE PLASTIC COVER BY THE HOOD RELEASE HANDLE. PLUG THE OTHER END INTO YOUR PC USB PORT AND THE USB DRIVER WILL SELF INSTALL. START THE HEX FLASH APPLICATION. TURN IGNITION TO POSITION 2 (ENGINE NOT RUNNING).
- 5) IF YOUR HEX FLASH CABLE IS NOT RECOGNIZED, YOU MAY NEED TO TRY A DIFFERENT USB PORT ON YOUR COMPUTER OR REMOVE THE DRIVER MANUALLY IN "HARDWARE SETTINGS" AND RE-INSTALL THE DRIVER MANUALLY (AS OPPOSED TO AUTO INSTALL) AND POINT TO THE HEX FLASH DRIVER DIRECTORY UNDER "C:\PROGRAM FILES\HEX FLASH\DRIVER". DO NOT INSTALL RECOMMENDED DRIVERS OR SEARCH FOR DRIVERS.
- 6) FOLLOW STEPS IN THE PROGRAM INSTRUCTION GUIDE. NOTE YOU CAN RESTORE THE ORIGINAL PROGRAM IN YOUR CAR YOURSELF (AS LONG AS YOU RETAIN THE ORIGINAL READOUT THAT YOU ARE ABOUT TO MAKE).

DISCLAIMER: BY CLICKING ON THE "I ACCEPT" BUTTON IN THE HEX FLASH PROGRAMMING APPLICATION, YOU AGREE TO THE TERMS AND CONDITIONS SET FORTH IN THE PROGRAMMING APPLICATION.

FOR OFF ROAD USE ONLY

INSTALLATION IN WINDOWS 8

To install the Hex Flash program in Windows 8, you must disable “driver signature enforcement”. You can do this as shown in the steps below:

- 1) Point your mouse in the bottom right corner of your screen and a vertical menu will appear in the right margin. Click on the bottom icon labeled “Settings”.
- 2) A new menu will appear in the right margin. Click on “Change PC settings”.
- 3) A new menu will appear. Click on “General”.
- 4) A new menu will appear on the right. Scroll down and under the Advanced setup section click on “Restart Now”.
- 5) The following menu will appear. Click on “Troubleshoot”



- 6) The following menu will appear. Click on “Advanced options”



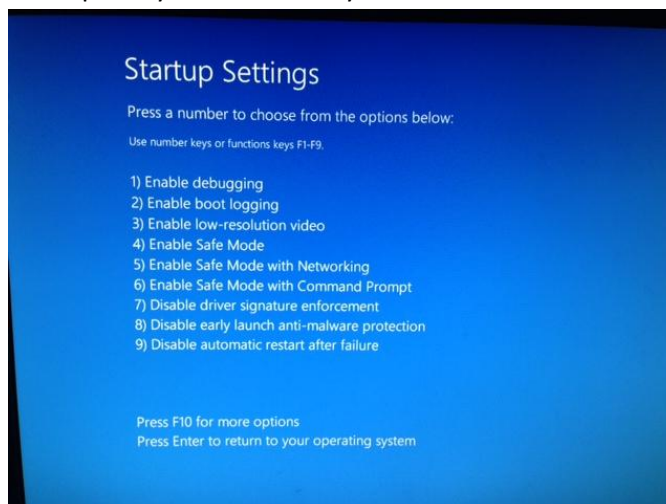
- 7) The following menu will appear. Click on “Startup Settings”.



- 8) The following menu will appear. Click on “Restart”.



- 9) The following menu will appear. Press “F7” on your keyboard and the computer will start up and you will be ready to install the Hex Flash Driver manually by pointing to it.



MANUAL DRIVER INSTALL

In **"Control Panel"** click on

WIN8 - **"view devices and printers"** in Hardware and Sounds heading

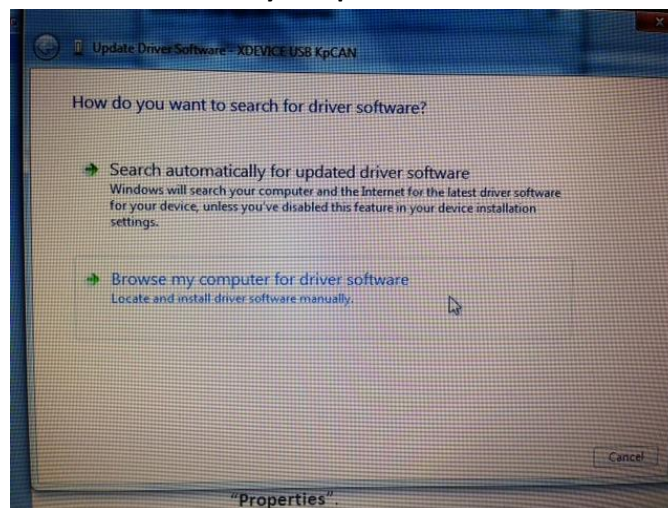
WIN7- **"device manager"**

Look for the **"VF FLASH USB"** with an exclamation mark and right click it and click on **"Properties"**.

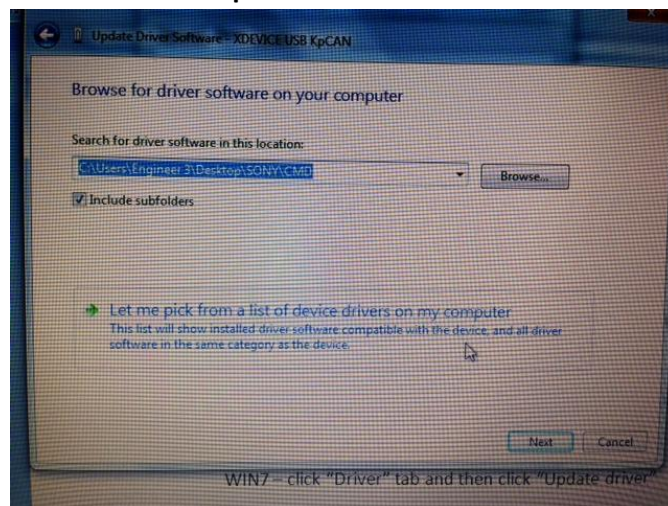
WIN8 – click **"Hardware"** tab and then click **"Properties"**

WIN7 – click **"Driver"** tab and then click **"Update driver"**

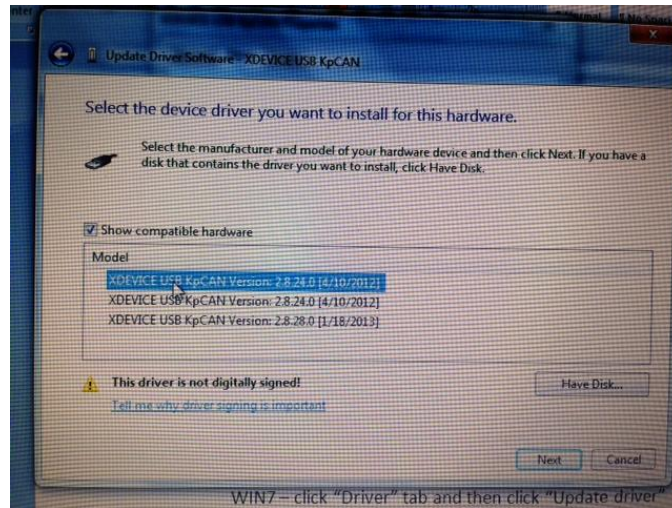
Then click **"Browse my computer for driver software"** below



Then click **"Let me pick from a list of device drivers on my computer"** below



Then click **"Have Disk"** below



Then click **"Browse"** in the new pop-up menu and point to location of driver as below:

C:\Program Files (x86)\HEX FLASH\driver

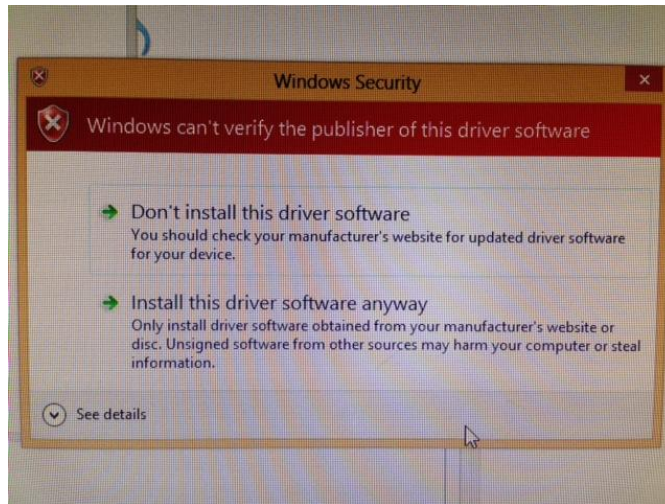
Then click **"ok"**

Select **"XDEVICE USB KpCAN"** and then click **"Next"**

The following message will appear, click **"Yes"** below



An additional warning message “Windows can’t verify the publisher of this driver software” will appear, click “**Install this driver software anyway**” below



You should then see a successfully installed message.

Proceed to the Hex Flash application.

READ AND WRITE TO ECU

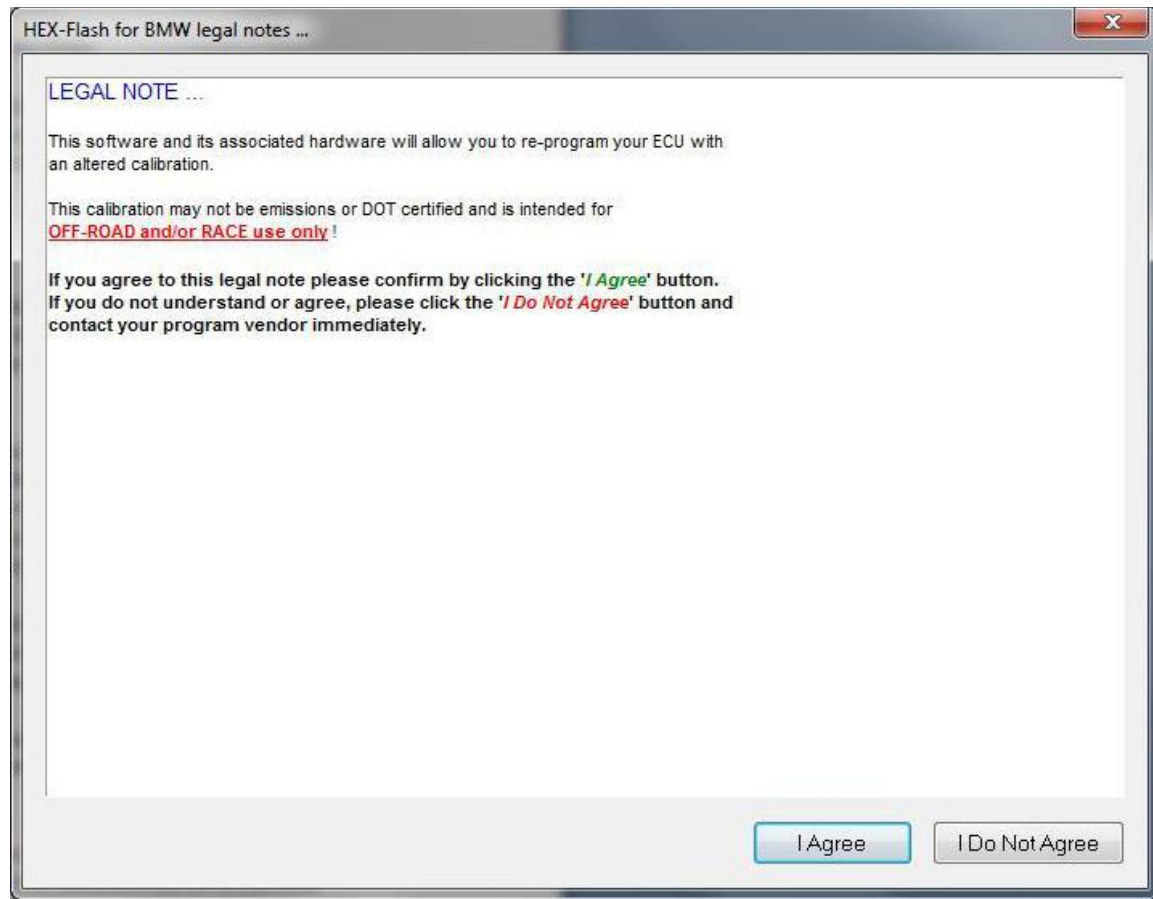


3 steps to programming your car:

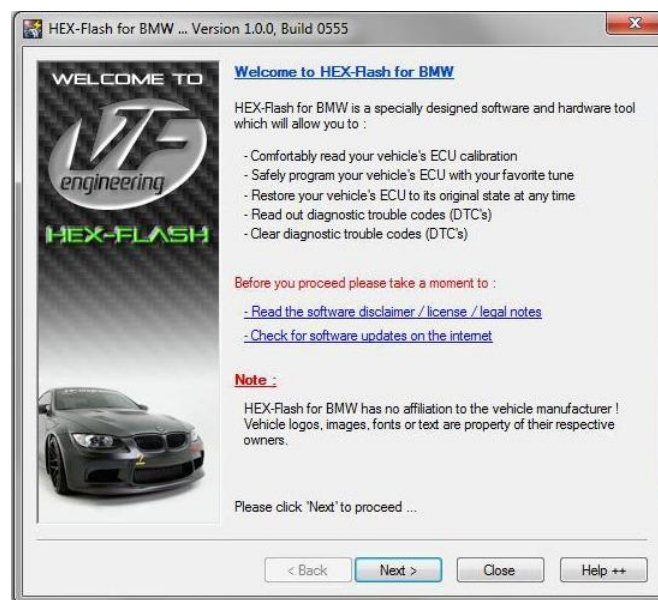
- 1) Read out the computer in your car (ECU).
- 2) Send the read to your Hex flash dealer who will then email the performance software to you (allow 24-48hrs)
- 3) Program your car.

With laptop on and plugged into a power outlet, Hex Flash cable connected to laptop and car, with key on (car not running) – lights and all electronics off (use a battery charger on the car if the battery condition is weak.)

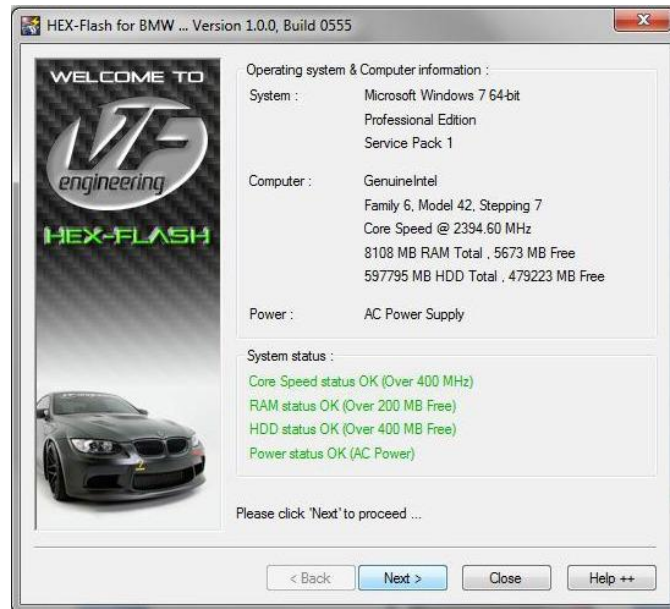
Upon opening the application, the following screen will appear>



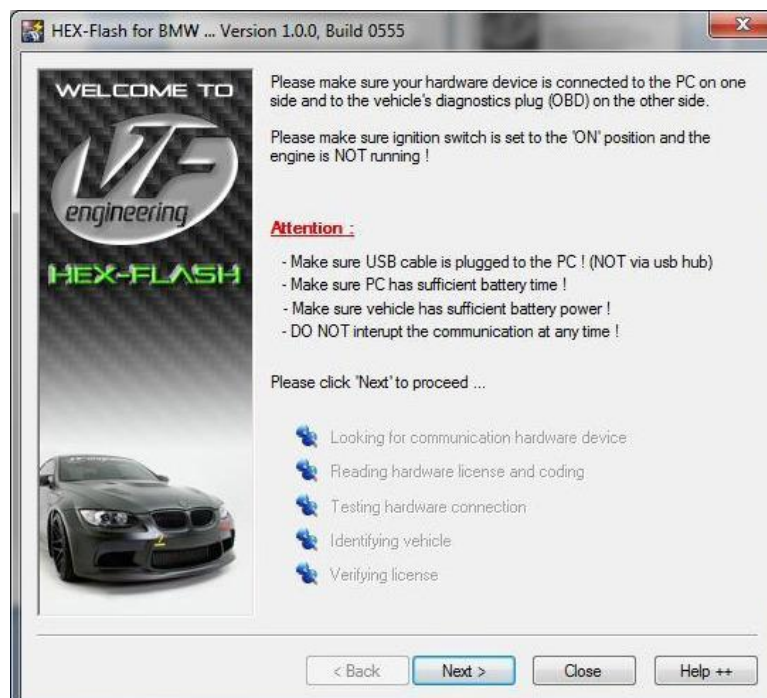
Above> The opening screen lists Terms and Conditions of use – if you agree click “I agree” to continue to the next screen.



Above> The “Welcome” screen shown will appear if you have agreed to the terms and conditions – read information and click “next” to proceed



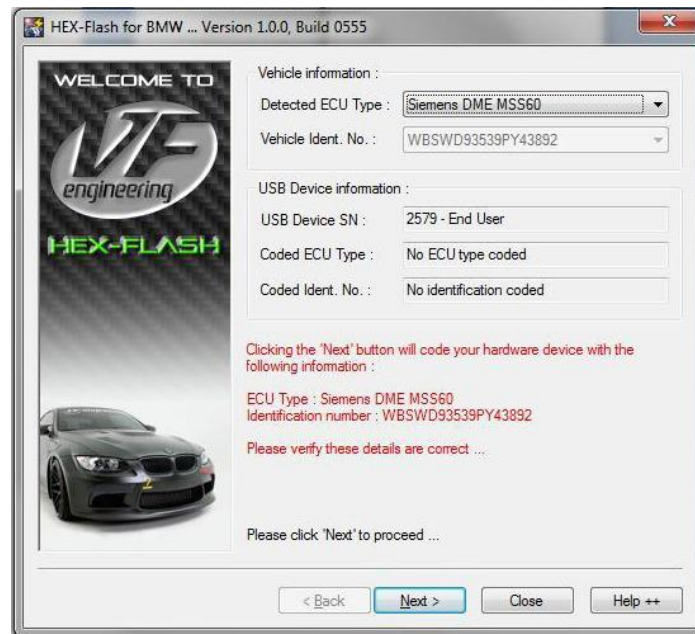
Above> The “operation system” screen will appear next. This step verifies your programming computer hardware configuration and will prompt you to click “next” if approved.



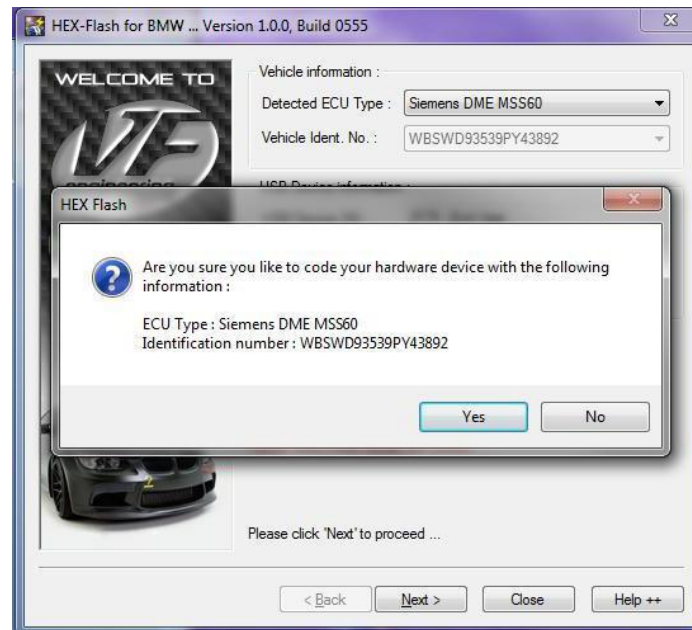
Above> The next screen will prompt you to begin the connection to car, verification process. To start click "next"



Above> A pop up will appear. The yellow hatching will progress as the connection is being made.



Above>Once successfully connected the car, the ECU family (Siemens MSS60), VIN#, Your Hex Flash Cable serial # will be listed. Make a note of your cable serial # (in the above example it is 2579) and click next to marry your cable to your car.



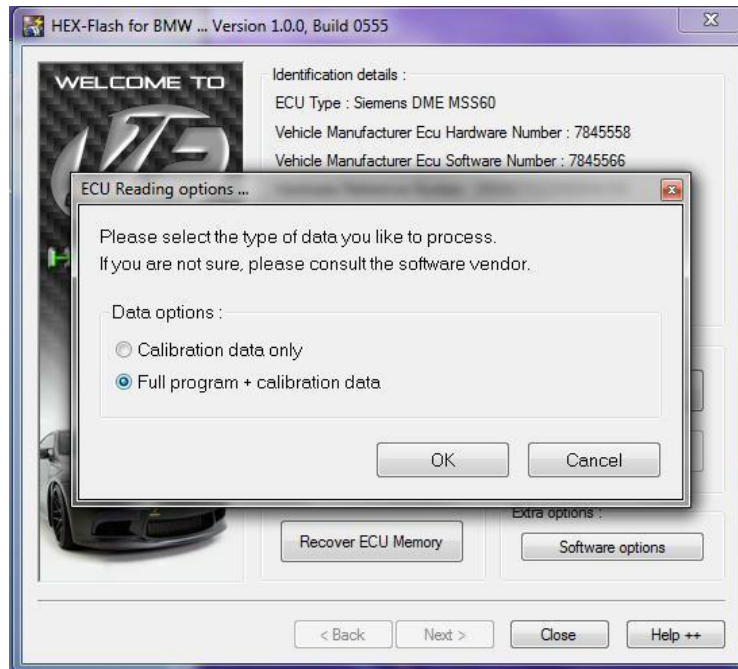
Above> A pop-up will appear and you will be asked if you would like to code (marry) your hardware (Hex Flash Cable) with your VIN#. Click yes to proceed



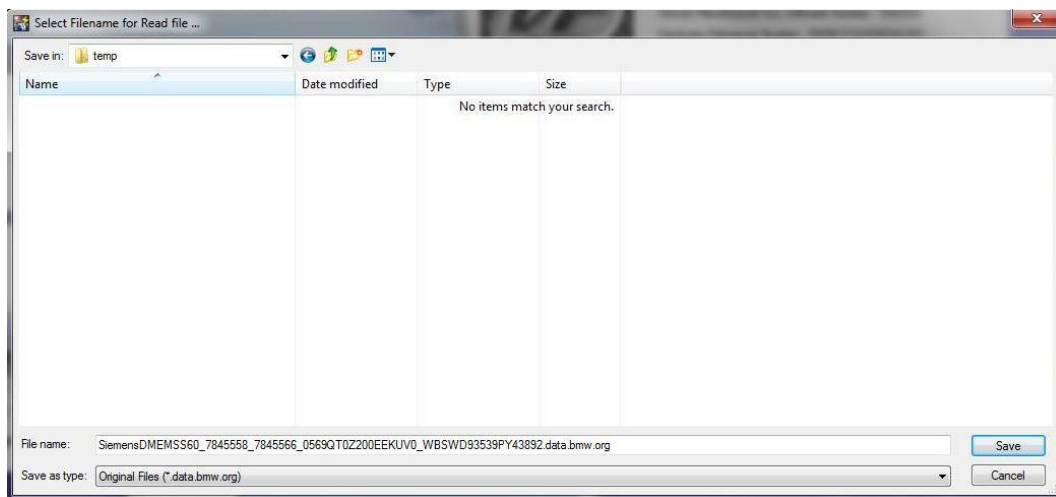
Above> The identification screen with a ID information and a number of options will appear. The most important number is the Hardware reference # (actually software ref#) which in this screen shot is 0569QT0Z200EEKUV0. The 200E signifies your BMW factory software version# and KUV0 signifies your car is a US model and KEV0 is a European model. To date, 240E is the latest and optimal factory software version. Hex Flash tuning uses this latest version.

If your software version is lower than 240, you will be provided with a file to program your ECU to the current latest version 240 software and a second file which is the actual Hex Flash performance software. If you already have 240 software, you will be provided with just the performance software.

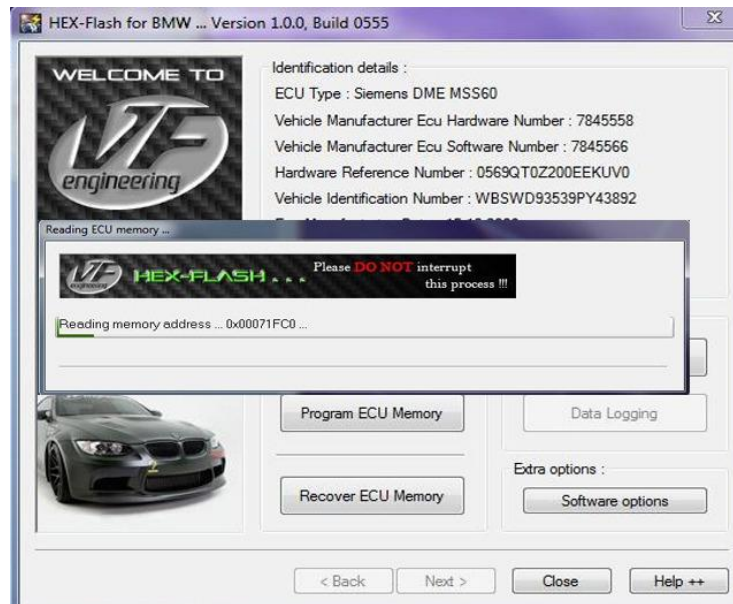
To commence reading click “Read ECU Memory”



Above> A popup will appear. Select “full program + calibration data” to opt to read the full ECU out.

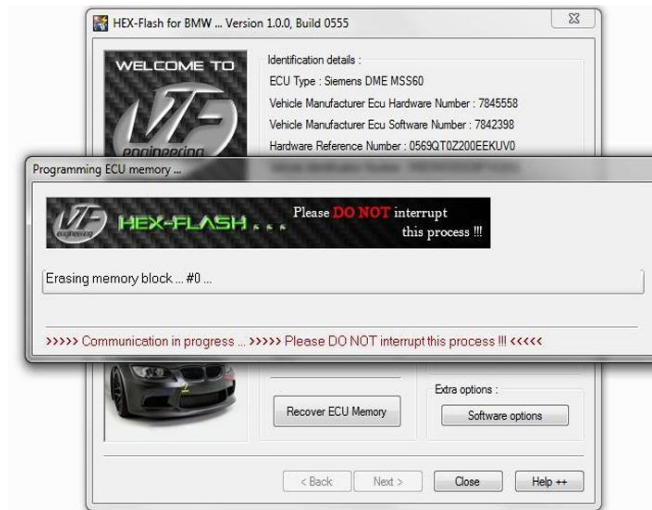


Above> You will be prompted where you wish to save this readout (backup) of your ECU. This readout can be used at a later stage to restore the car to its original condition. When you click "save" the following screen will appear.

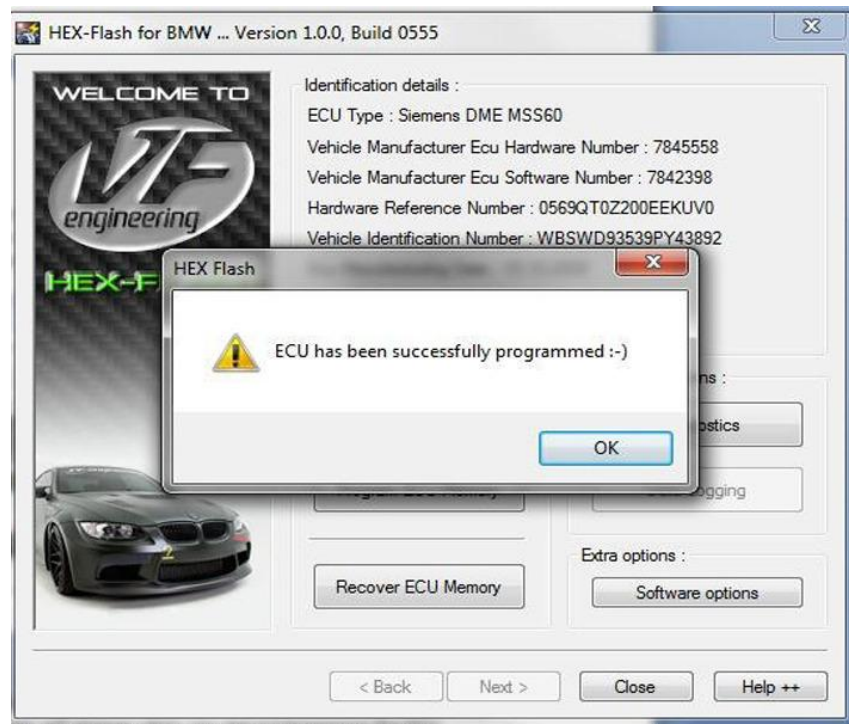


Above> The progress bar popup will appear showing progress of the reading and once the ECU is read out in full, the file will be saved and you can open the folder it is saved in. You will then be returned to the Identification screen. You can then exit the Hex Flash application.

- 1) Email this read and your Hex Flash serial # to your Hex Flash dealer with your invoice number.
- 2) Your Hex Flash dealer will acknowledge and return either 1 (if you have 240 software version) or 2 files as explained above. Program each file by restarting the application and at the "Identification screen" press "Program ECU Memory" and select the appropriate file provided by your Hex Flash dealer.



Above> A small pop up with a progress bar will appear when you are programming the ECU.



Above> Your ECU is successfully programmed. It is advisable to clear adaptations, however they will re-adjust to the new software over a period of approx 100 miles of varied driving conditions. After programming the Check Engine Light may illuminate but no error codes may be incurred. The CEL will switch off after 4-5 engine starts and this is normal.

End.